

## COVER STRIP

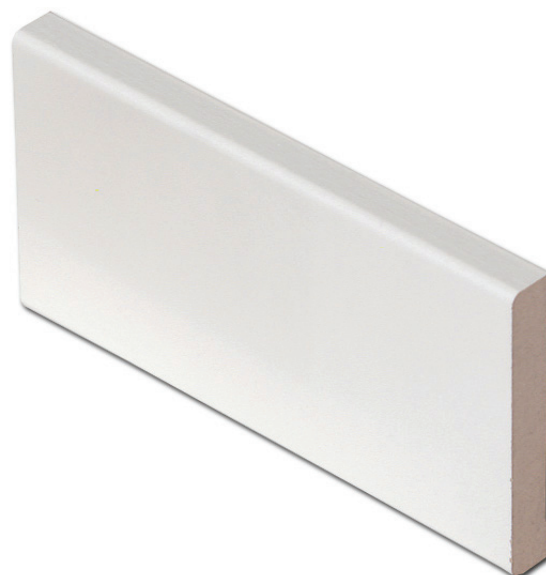
456-00

12x70x3300

MDF, white

5 pc./package

EAN 6418172004568



## APPLICATION

MDF and wooden elements are intended for indoor use only.

PVC and Aito sauna products are suitable for use in damp indoor premises.

## BEFORE INSTALLATION

Always allow the product temperature and humidity to stabilise prior to installation.

Keep the products at the intended installation premises for 2-3 days. The room temperature must be around 20°C and relative air humidity less than 50%.

## INSTALLATION

First, cut the elements to suitable length. Prepare the necessary mitres.

MITRING: MDF and wooden elements can be mitred by saw-cutting.

NAILING: Use finishing nailer, recommended nailing distance 60 cm; attach the element additionally from both ends.

HIDDEN FASTENER: Used with MDF products. Measure the correct installation height from the floor for the fastener using an element piece (approx. 2 cm). The fastener must reach the groove behind the element. Install the fastener by screw or nail, depending on the substrate. Installation interval: approx. 2 pc./metre. The same fastener is also usable at corners, by bending it at a 90° angle at the centre. Always install a fastener to element joints.

GLUING: Use a clamp intended for gluing. Spread the glue over element back surface and press it against the wall. Separate the element from the base surface and check if there is enough glue. Wait for a moment, allowing the glue to absorb into the surface, and press the element against the surface again.

SCREWING: The distance between a screw hole and element edge must be at least 20 mm. The hole must be of the same size as the screw (excluding the thread). In case of concrete walls, use a suitable nylon dowel.

## INSTALLED PRODUCT = APPROVED PRODUCT

Any manufacturing faults discovered in the elements must be notified before their installation.

**ATTENTION!**