

## SKIRTING BOARD

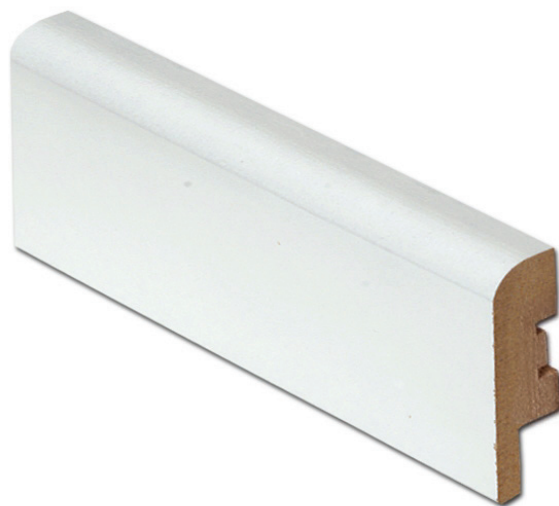
**382-50**

16x58x2750

MDF, white, guide groove

4 pc./package

EAN 6418172053825



### APPLICATION

MDF and wooden skirting boards are intended for indoor use only.

PVC and Aito sauna product boards are suitable for use in damp indoor premises.

### BEFORE INSTALLATION

Always allow the skirting board temperature and humidity to stabilise prior to installation.

Keep the boards at the intended installation premises for 2-3 days. The room temperature must be around 20°C and relative air humidity less than 50%.

### INSTALLATION

First, cut the boards to suitable length. Prepare the necessary mitres.

MITRING: MDF and wooden skirting boards can be mitred by saw-cutting.

NAILING: Use finishing nailer, recommended nailing distance 60 cm; attach the board additionally from both ends.

HIDDEN FASTENER: Used with MDF skirting boards. Measure the correct installation height from the floor for the fastener using a board piece (approx. 2 cm). The fastener must reach the groove behind the skirting board. Install the fastener by screw or nail, depending on the substrate. Installation interval: approx. 2 pc./metre. The same fastener is also usable at corners, by bending it at a 90° angle at the centre. Always install a fastener to skirting board joints.

GLUING: Use a clamp intended for gluing. Spread the glue over board back surface and press it against the wall. Separate the board from the base surface and check if there is enough glue. Wait for a moment, allowing the glue to absorb into the surface, and press the board against the surface again.

SCREWING: The distance between a screw hole and board edge must be at least 20 mm. The hole must be of the same size as the screw (excluding the thread). In case of concrete walls, use a suitable nylon dowel.

### INSTALLED PRODUCT = APPROVED PRODUCT

Any manufacturing faults discovered in the skirting boards must be notified before their installation.

**ATTENTION!**